

Cover *Catalogue*



GRAPHI S STUDIO
MADE IN ITALY

BOOK DETAIL'S:



Soft cover with satin lamination



Paper featured:
smooth paper
without lamination

Featuring our
perfect binding

Cover Catalogue

COVERS

- Metal covers
- Varnished covers
- Leather covers
- Distressed leather covers
- Nappa leather covers
- Cowhide covers
- Leatherette covers
- Silk covers
- Crystal Glance
- Dust cover jacket
- Hardback covers
- Sleeves
- Luxury Boxes

METAL



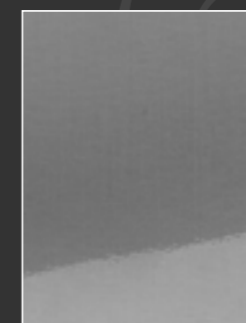
METAL

Impressed Text

..... 1 Printing



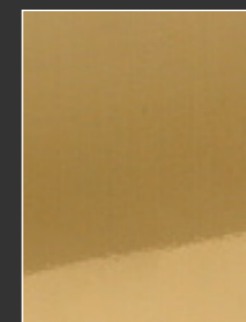
Font shown: Helvetica



Code: SILVER
Polish finish



Code: SILVER
Satin finish



Code: GOLD
Polish finish



Code: GOLD
Satin finish

COVERS METAL

A consolidated success, thanks to the versatility of a material which guarantees the highest level of customization.

The metal plate, available in both gold and silver, is available in with a satin or polish finish. The cover can be personalized by printing your image to the surface

The cover is then assembled with the maximum precision onto a leatherette back and spine, which can be upgraded – as an option - to leather, nappa or distressed.



Version shown
Vertical book
150 Gold Satin finish
Leatherette back and spine

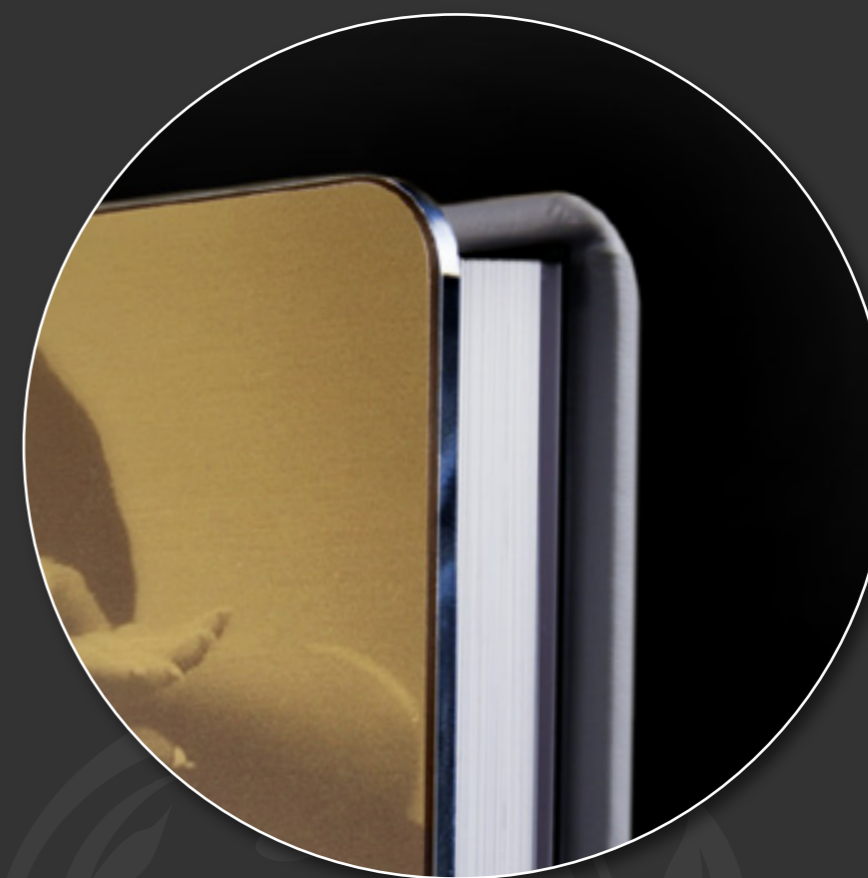
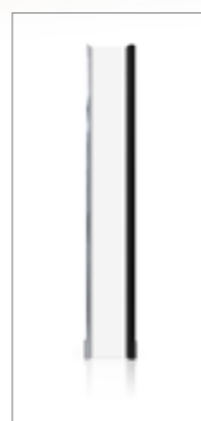


Version shown
Landscape book
150 Gold Satin finish
Leatherette back and spine



Version shown
Square book
150 Gold Satin finish
Leatherette back and spine

Available size
VERTICAL
20x30
25x35
30x40
35x45
40x50
SQUARE
20x20
25x25
30x30
35x35
40x40
LANDSCAPE
30x20
35x25
40x30
45x35



Cover handcrafting detail

Covers catalogue
COVERS METAL



Code:
Your File
 Send your file
 print ready

Code:
125 SILVER
 Polish finish



Code:
125 SILVER
 Satin finish



Code:
125 GOLD
 Polish finish



Code:
125 GOLD
 Satin finish



Code:
150 SILVER
 Polish finish



Code:
150 SILVER
 Satin finish



Code:
150 GOLD
 Polish finish



Code:
150 GOLD
 Satin finish



Code:
190 SILVER
 Polish finish



Code:
190 SILVER
 Satin finish



Code:
190 GOLD
 Polish finish



Code:
190 GOLD
 Satin finish



Code:
900 SILVER
 Polish finish



Code:
900 SILVER
 Satin finish



Code:
900 GOLD
 Polish finish



Code:
900 GOLD
 Satin finish



VARNISHED



VARNISHED

Impressed Text

..... 1 Laser engraving



Font shown: Edwardian - Helvetica



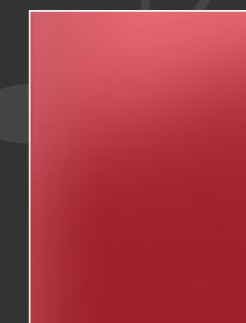
Code: V1 M
Metallized grey



Code: V2 M
Metallized black



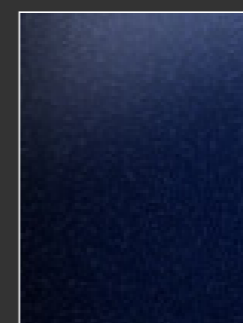
Code: V2
Pastel black



Code: V3 M
Metallized red



Code: V3
Pastel red



Code: V4 M
Metallized blue



Code: V5 M
Metallized green

COVERS VARNISHED

Elegance associated with modernity gives the varnished a clean, but attractive cover, with crisp lines and colours (available in metalized or pastel shades).

An style which enriches your creation, a contemporary, harmonic and essential touch.

The engraving of the names and date with the Edwardian font, the rounded edges and the varnished metal plate stress the clear lines and create the perfect mix for the avant-garde photographer.

Another touch of refinement can be conferred by upgrading the back and spine to nappa, distressed or leather.



Version shown
**Landscape book
V3M**
Leatherette back
and spine

Version shown
**Square book
V3M**
Leatherette back
and spine

Version shown
**Vertical book
V3M**
Leatherette back and spine

Available size
VERTICAL
20x30
25x35
30x40
35x45
40x50
SQUARE
20x20
25x25
30x30
35x35
40x40
LANDSCAPE
30x20
35x25
40x30
45x35



Cover handcrafting detail

COVERS VARNISHED

Some samples of
CUSTOMIZED COVERS

Code:

V1 M

Metallized grey



Code:

V2 M

Metallized black



Code:

V2

Pastel black



Code:

V3 M

Metallized red



Code:

V3

Pastel red



Code:

V4 M

Metallized blue



Code:

V5 M

Metallized green



Version shown

Landscape book

V5 M

Leatherette back and spine

File



Version shown

Vertical book

V1 M

Spine N07

Version shown

Square book

V4 M

Leatherette back and spine

File



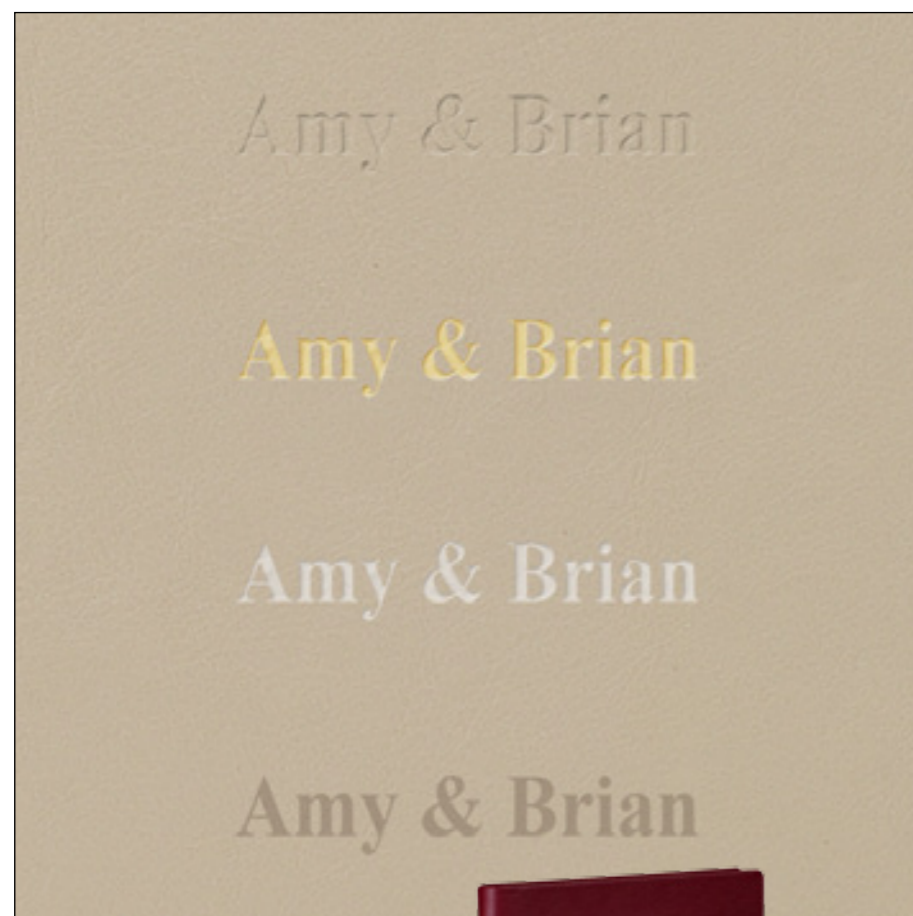
LAUREN & JOSH
FEBRUARY 20, 2011

LAUREN & JOSH
FEBRUARY 20, 2011

Leather



Leather

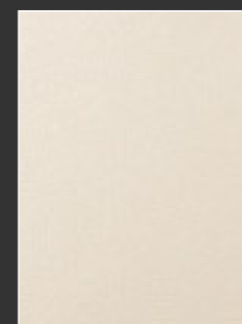


Impressed Text

(Font available: Times, Helvetica)

- 1 Debossing
- 2 Gold foil debossing
- 3 Silver foil debossing
- 4 Engraving

Font shown: Times



Code: P00
Ivory



Code: P01
Brown



Code: P02
Burgundy



Code: P03
Light blue



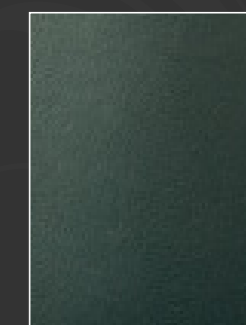
Code: P04
Black



Code: P05
Sienna



Code: P06
Red



Code: P07
Dark green



Code: P08
Light green



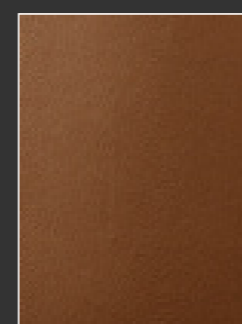
Code: P09
Dark blue



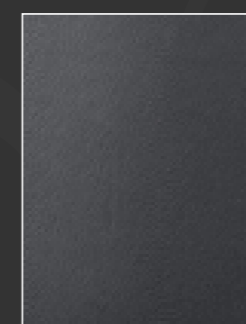
Code: P10
Snow white



Code: P11
Tobacco



Code: P12
Cappuccino



Code: P13
Steel grey

The 14 available colours might be subject to slight variations of shade, since the material is entirely natural.

Leather

The classic covers exude excellence.

A timeless offer, which keeps its appeal unchanged thanks to a superior material and to a simple and elegant outlook, available in 14 different colours.

A traditional look, with attention paid to each single detail, guaranteed to succeed. The available colours might be subject to slight variations of shade, since the material is entirely natural.

Version shown
Landscape book
P 09
Embossing
Helvetica

Version shown
Square book
P 09
Embossing
Helvetica

Version shown
Vertical book
P 09
Embossing *Helvetica*

Available size
VERTICAL
20x30
25x35
30x40
35x45
40x50
SQUARE
20x20
25x25
30x30
35x35
40x40
LANDSCAPE
30x20
35x25
40x30
45x35



Cover handcrafting detail

Leather

Code:

P00

Ivory



Code:

P01

Brown



Code:

P02

Burgundy



Code:

P03

Light blue



Code:

P08

Light green



Code:

P09

Dark blue



Code:

P10

Snow white



Code:

P11

Tobacco



Code:

P04

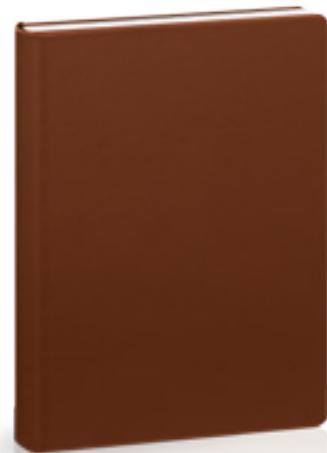
Black



Code:

P05

Sienna



Code:

P06

Red



Code:

P07

Dark green



Code:

P12

Cappuccino



Code:

P13

Steel grey



Die Cut Leather

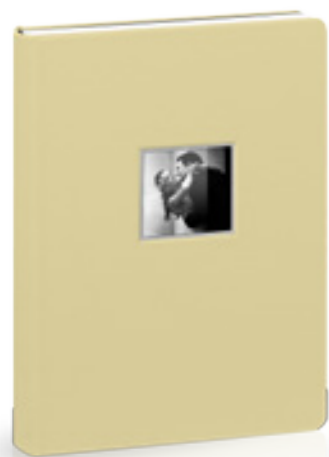
(CODE 200)

A stylish look, classic and romantic. The luxury Italian leather die cut offers a classic way to customize your book with a picture turned to the same tone as the leather colour.

Code:

200-P00

Ivory



Code:

200-P01

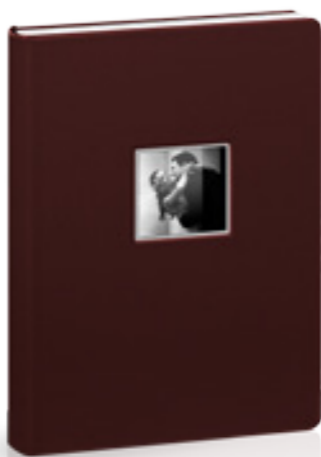
Brown



Code:

200-P02

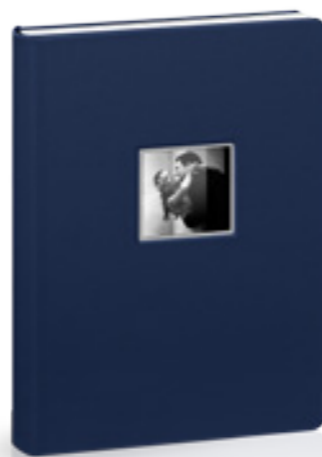
Burgundy



Code:

200-P03

Light blue



Code:

200-P08

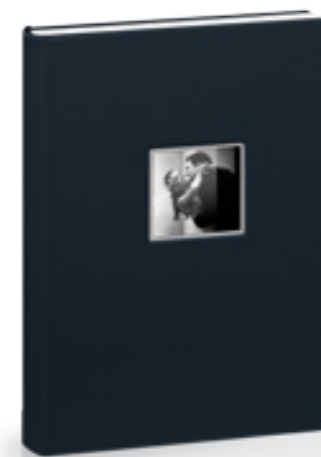
Light green



Code:

200-P09

Dark blue



Code:

200-P10

Snow white



Code:

200-P11

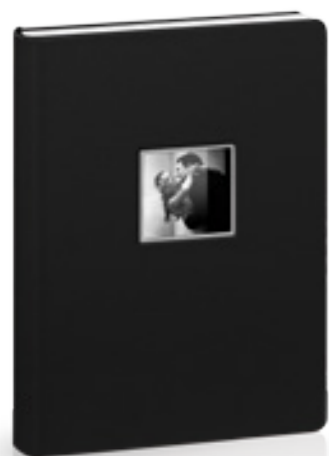
Tobacco



Code:

200-P04

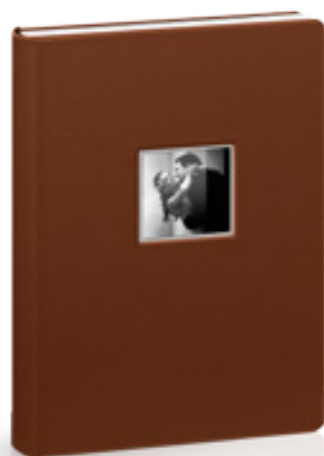
Black



Code:

200-P05

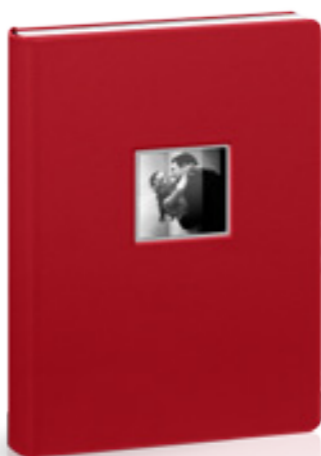
Sienna



Code:

200-P06

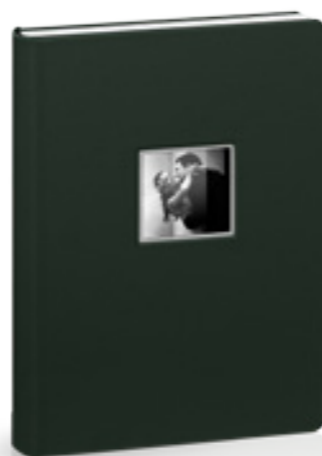
Red



Code:

200-P07

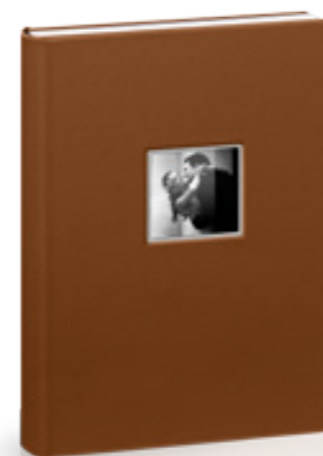
Dark green



Code:

200-P12

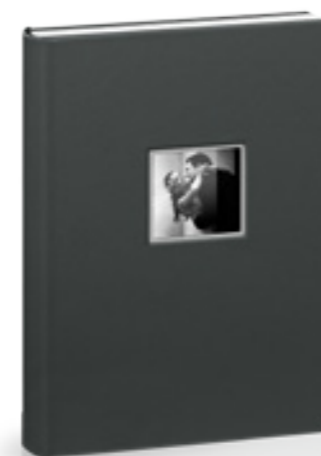
Cappuccino



Code:

200-P13

Steel grey



COVERS *Die Cut Leather*

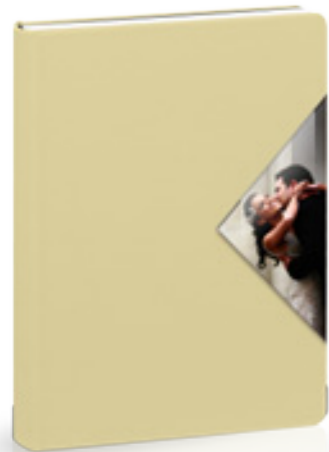
(CODE 201)

A new, innovative and creative way to mean classic. These covers are personalized with a dynamic and transparent insert in the luxury leather.

Code:

201-P00

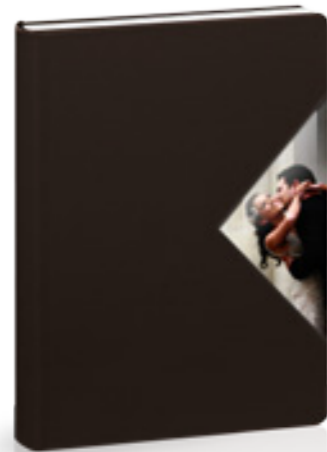
Ivory



Code:

201-P01

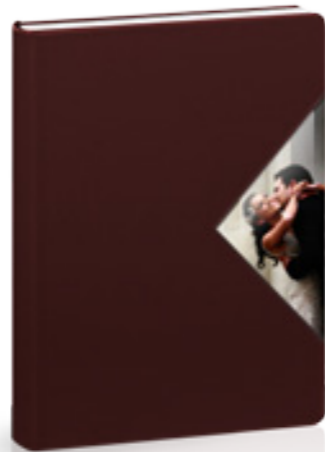
Brown



Code:

201-P02

Burgundy



Code:

201-P03

Light blue



Code:

201-P08

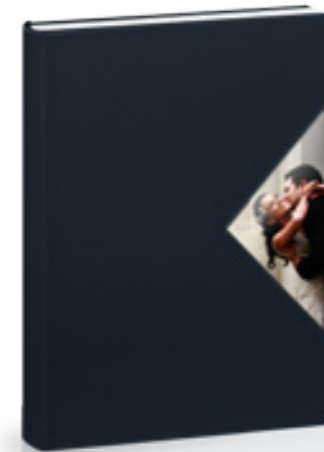
Light green



Code:

201-P09

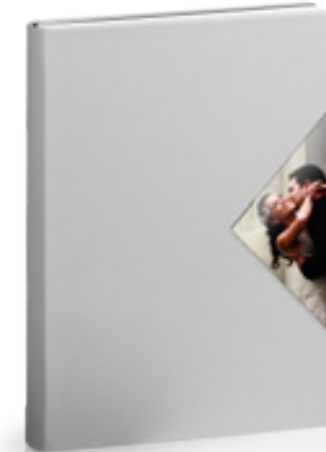
Dark blue



Code:

201-P10

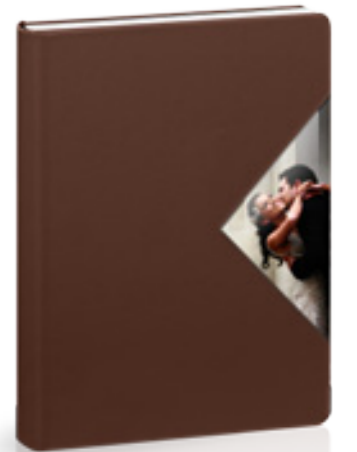
Snow white



Code:

201-P11

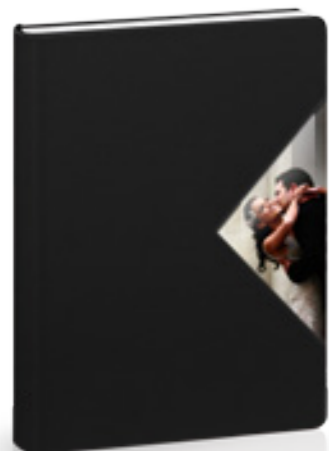
Tobacco



Code:

201-P04

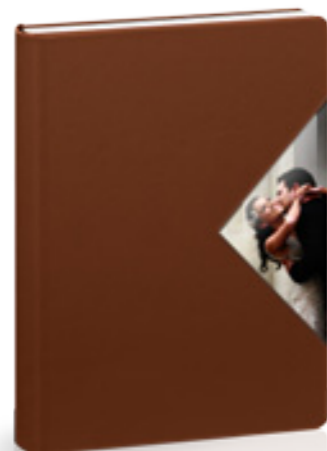
Black



Code:

201-P05

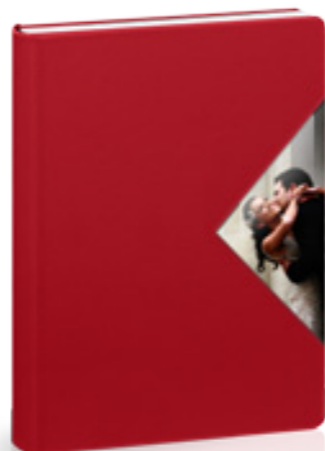
Sienna



Code:

201-P06

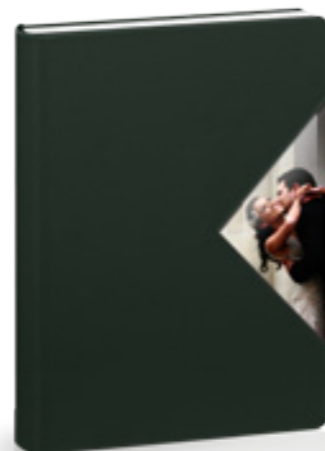
Red



Code:

201-P07

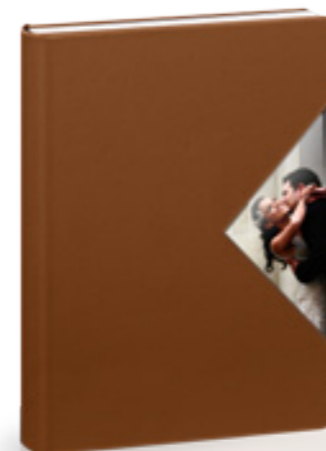
Dark green



Code:

201-P12

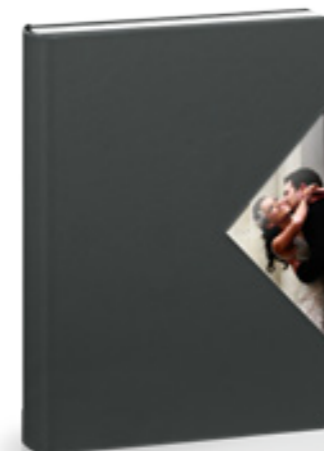
Cappuccino



Code:

201-P13

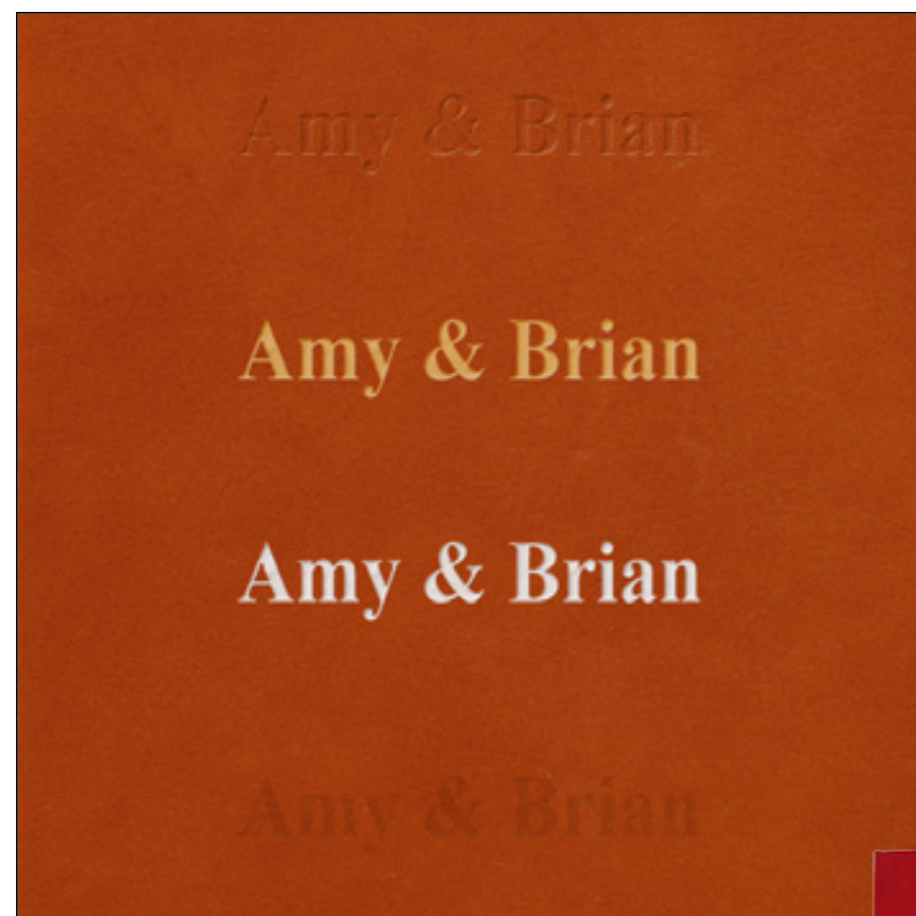
Steel grey



Distressed



Distressed



Impressed Text

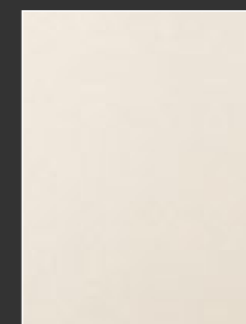
(Font available: Times, Helvetica)

- 1 Debossing
- 2 Gold foil debossing
- 3 Silver foil debossing
- 4 Engraving

Font shown: Times



Code: D00
White



Code: D01
Cream



Code: D02
Mode beige



Code: D03
Sunny yellow



Code: D04
Orange



Code: D05
Blue grey



Code: D06
Ruby



Code: D07
Cinnamon



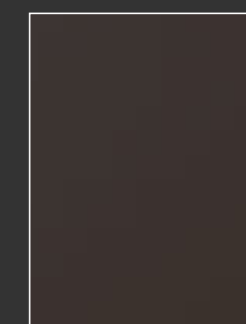
Code: D08
Brandy



Code: D09
Chocolate



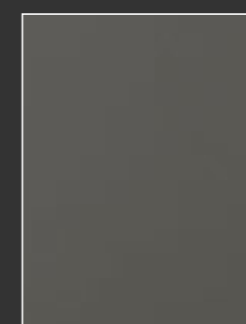
Code: D10
Dark brown



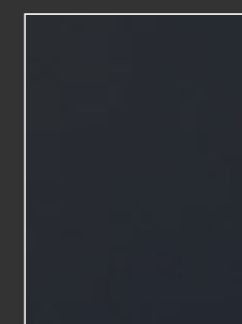
Code: D11
Wenge



Code: D12
Grey brown



Code: D13
Fog



Code: D14
Blue navy



Code: D15
Black

The 16 available colours might be subject to slight variations of shade, since the material is entirely natural.

Distressed

The vintage look is the distinctive feature of this cover, an innovative proposal that is deeply rooted in the classical layout.

The specific production process gives a prestigious look, granting that a perfect mix of modern and classic blends into a product of extremely high quality.

An additional classy touch can be added by choosing to emboss the text, an option now available also with silver or gold foil. The 16 available colours might be subject to slight variations of shade, since the material is entirely natural.



Version shown
Landscape book
D 07
Embossing Times

Version shown
Square book
D 07
Embossing Times

Version shown
Vertical book
D 07
Embossing Times

Available size
VERTICAL
20x30
25x35
30x40
35x45
40x50
SQUARE
20x30
25x35
30x40
35x45
40x50
LANDSCAPE
30x20
35x25
40x30
45x35



Cover handcrafting detail

COVERS Distressed

Code:

D00
White



Code:

D01
Cream



Code:

D02
Mode beige



Code:

D03
Sunny yellow



Code:

D08
Brandy



Code:

D09
Chocolate



Code:

D10
Dark brown



Code:

D11
Wenge



Code:

D04
Orange



Code:

D05
Blue grey



Code:

D06
Ruby



Code:

D07
Cinnamon



Code:

D12
Grey brown



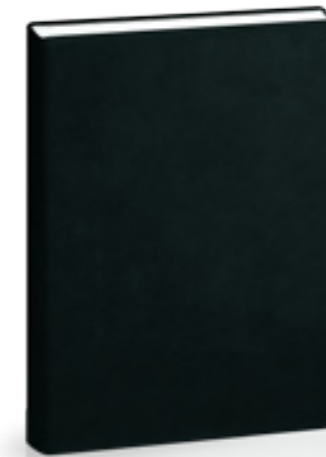
Code:

D13
Fog



Code:

D14
Blue Navy



Code:

D15
Black



Die Cut Distressed

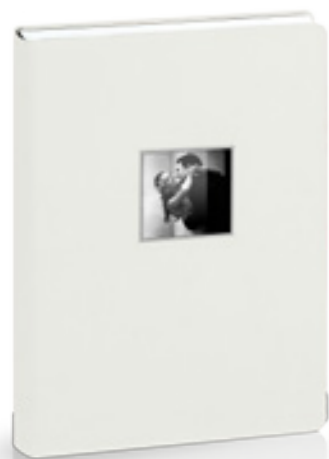
(CODE 200)

A stylish look, classic and romantic. The luxury Italian distressed die cut offers a classic way to customize your book with a picture turned to the same tone as the leather colour.

Code:

200-D00

White



Code:

200-D01

Cream



Code:

200-D02

Mode beige



Code:

200-D03

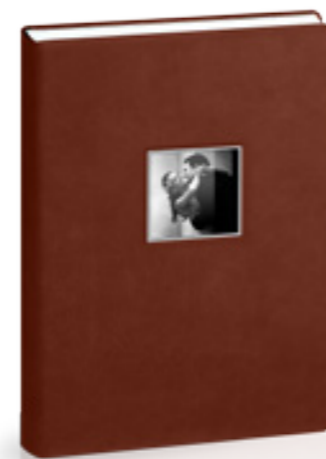
Sunny yellow



Code:

200-D08

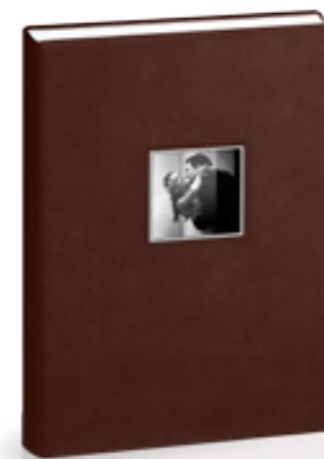
Brandy



Code:

200-D09

Chocolate



Code:

200-D10

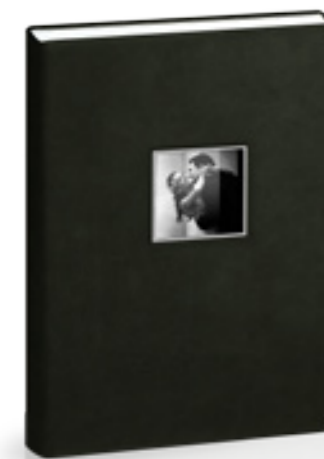
Dark brown



Code:

200-D11

Wenge



Code:

200-D04

Orange



Code:

200-D05

Blue grey



Code:

200-D06

Ruby



Code:

200-D07

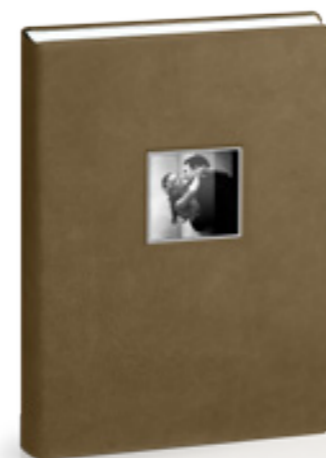
Cinnamon



Code:

200-D12

Grey brown



Code:

200-D13

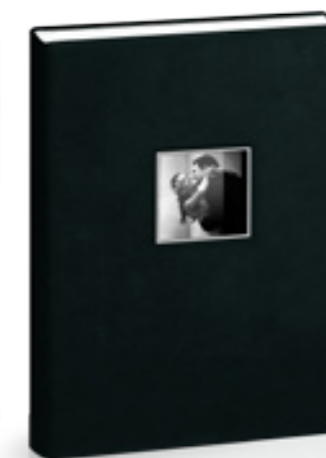
Fog



Code:

200-D14

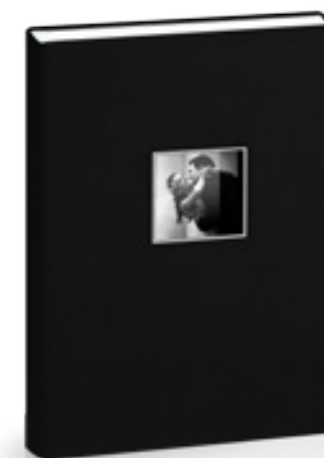
Blue Navy



Code:

200-D15

Black



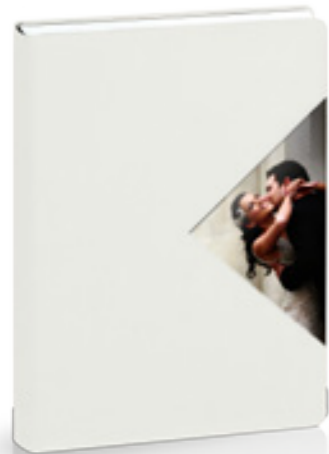
COVERS Die Cut Distressed

(CODE 201)

A new, innovative and creative way to mean classic. These covers are personalized with a dynamic and transparent insert in the luxury distressed.

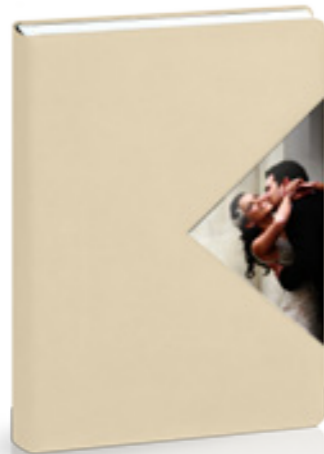
Code:

201-D00
White



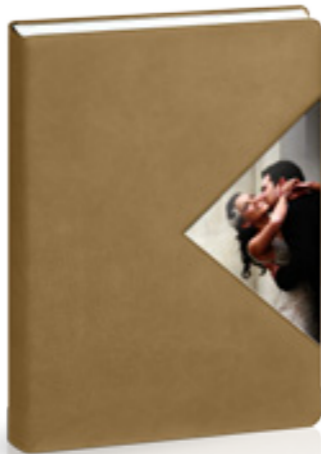
Code:

201-D01
Cream



Code:

201-D02
Mode beige



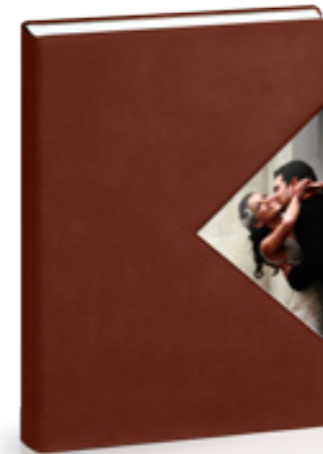
Code:

201-D03
Sunny yellow



Code:

201-D08
Brandy



Code:

201-D09
Chocolate



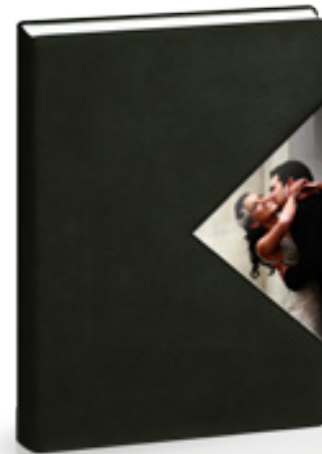
Code:

201-D10
Dark brown



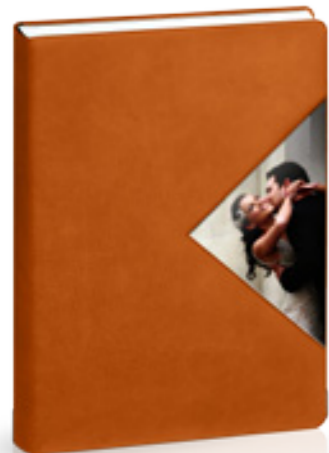
Code:

201-D11
Wenge



Code:

201-D04
Orange



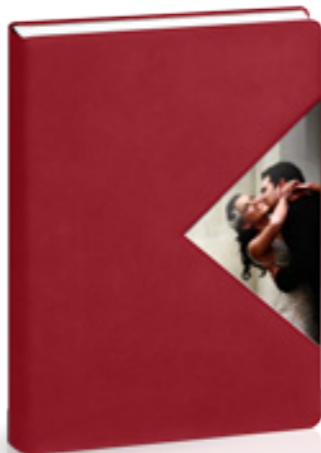
Code:

201-D05
Blue grey



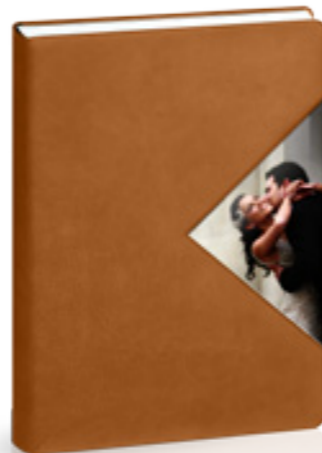
Code:

201-D06
Ruby



Code:

201-D07
Cinnamon



Code:

201-12
Grey brown



Code:

201-D13
Fog



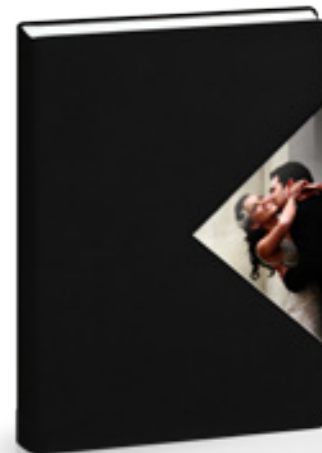
Code:

201-D14
Blue Navy



Code:

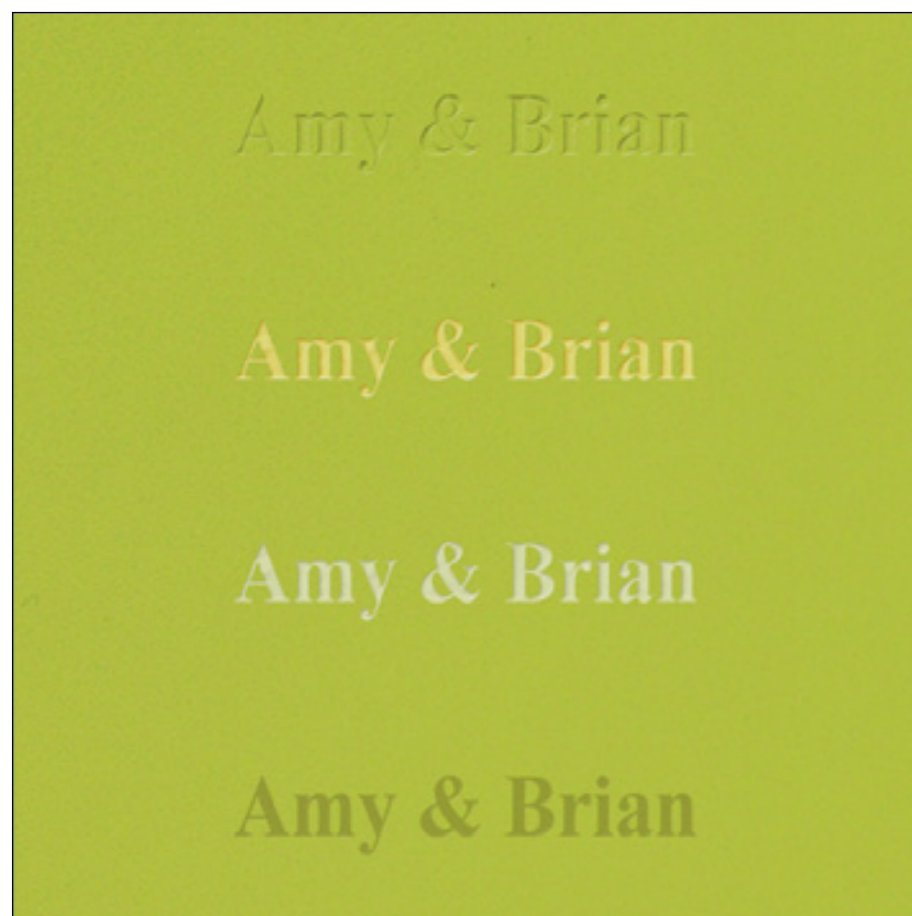
201-D15
Black



Nappa



Nappa



Impressed Text

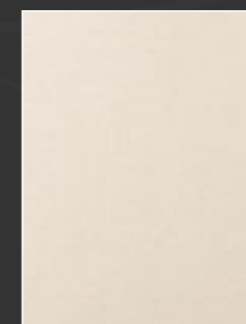
(Font available: Times, Helvetica)

- 1 Debossing
- 2 Gold foil debossing
- 3 Silver foil debossing
- 4 Engraving

Font shown: Times



Code: N00
White



Code: N01
Cream



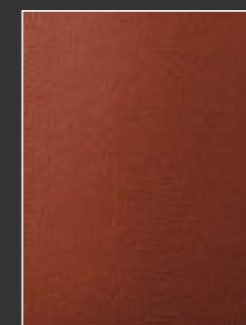
Code: N02
Wheat



Code: N03
Canyon



Code: N04
Saddle Brown



Code: N05
Rustic Brown



Code: N06
Dark Chocolate



Code: N07
Turquoise



Code: N08
Aquatic



Code: N09
Lime



Code: N10
Parrot



Code: N11
Maroon



Code: N12
Pink



Code: N13
Dark Pewter



Code: N14
Oceania



Code: N15
Black

The 16 available colours might be subject to slight variations of shade, since the material is entirely natural.

Nappa

Bringing the idea of "classic" to new heightened parameters of style.

Originally developed to suit Italian high fashion needs, the Nappa leather represents the idea of luxury itself, thanks to its smoothness and wide availability of colours.

This type of cover features a continuous binding, and can be customized by adding a text with a plain, silver or gold foil embossing. It is specifically dedicated to demanding clients.

Version shown
Vertical book
N 09
Laser engraving

Version shown
Landscape book
N 09
Laser engraving

Version shown
Square book
N 09
Laser engraving

Available size
VERTICAL
20x30
25x35
30x40
35x45
40x50
SQUARE
20x30
25x35
30x40
35x45
40x50
LANDSCAPE
30x20
35x25
40x30
45x35



Cover handcrafting detail

Code:

N00

White



Code:

N01

Cream



Code:

N02

Wheat



Code:

N03

Canyon



Code:

N08

Aquatic



Code:

N09

Lime



Code:

N10

Parrot



Code:

N11

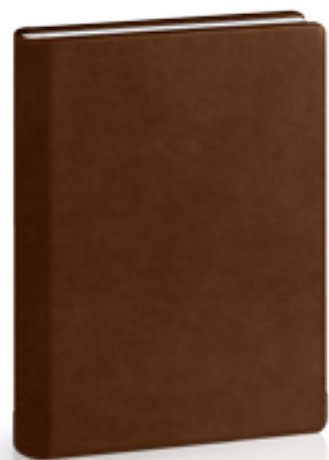
Maroon



Code:

N04

Saddle Brown



Code:

N05

Rustic Brown



Code:

N06

Dark Chocolate



Code:

N07

Turquoise



Code:

N12

Pink



Code:

N13

Dark Pewter



Code:

N14

Oceania



Code:

N15

Black



Die Cut Nappa

(CODE 200)

A stylish look, classic and romantic. The luxury Italian nappa die cut offers a classic way to customize your book with a picture turned to the same tone as the leather colour.

Code:

200-N00

White



Code:

200-N01

Cream



Code:

200-N02

Wheat



Code:

200-N03

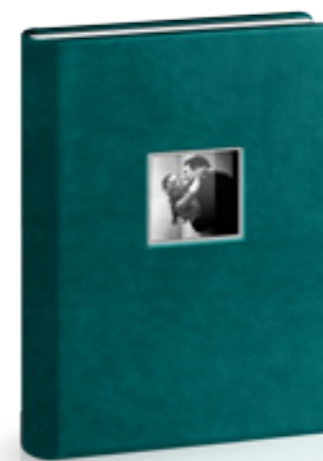
Canyon



Code:

200-N08

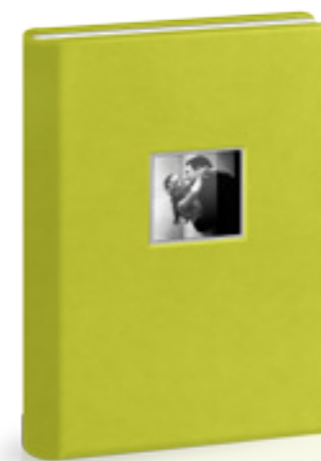
Aquatic



Code:

200-N09

Lime



Code:

200-N10

Parrot



Code:

200-N11

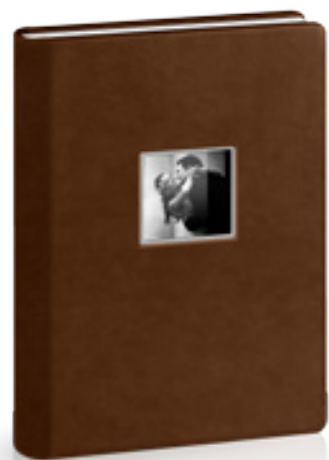
Maroon



Code:

200-N04

Saddle Brown



Code:

200-N05

Rustic Brown



Code:

200-N06

Dark Chocolate



Code:

200-N07

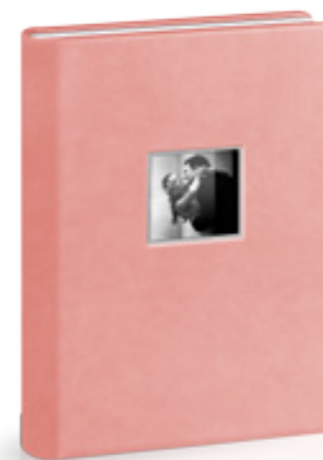
Turquoise



Code:

200-N12

Pink



Code:

200-N13

Dark Pewter



Code:

200-N14

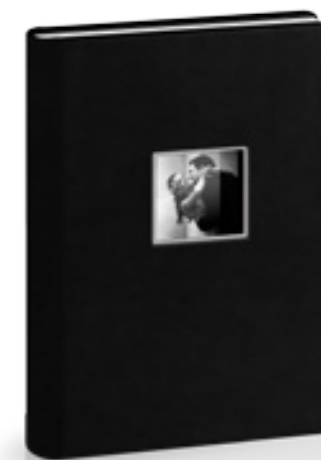
Oceania



Code:

200-N15

Black



Die Cut Nappa

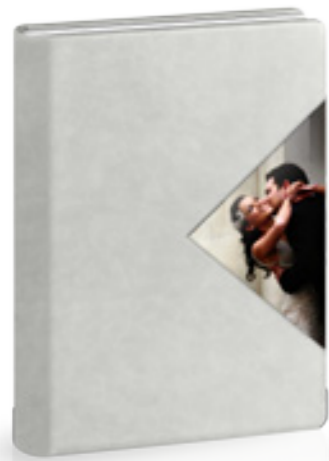
(CODE 201)

A new, innovative and creative way to mean classic. These covers are personalized with a dynamic and transparent insert in the luxury nappa.

Code:

201-N00

White



Code:

201-N01

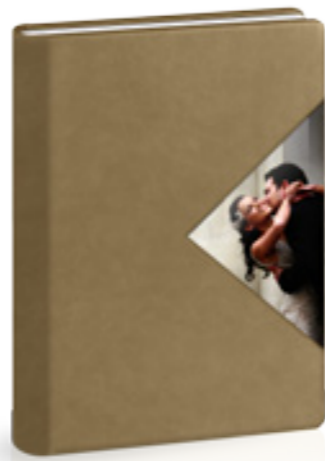
Cream



Code:

201-N02

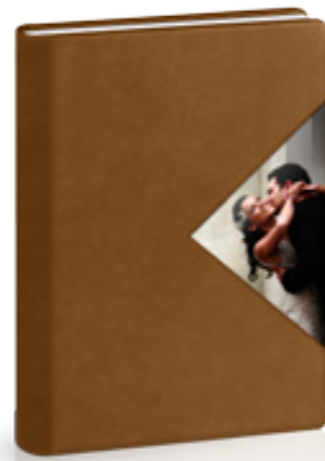
Wheat



Code:

201-N03

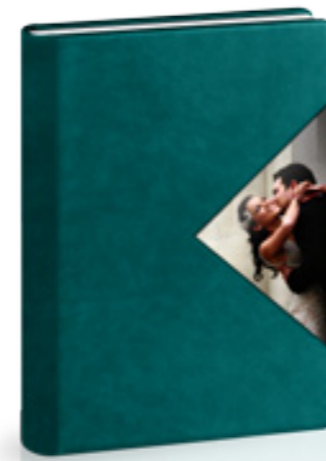
Canyon



Code:

201-N08

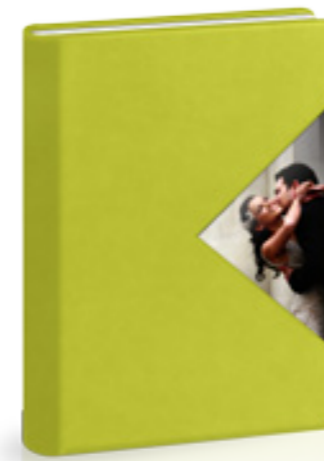
Aquatic



Code:

201-N09

Lime



Code:

201-N10

Parrot



Code:

201-N11

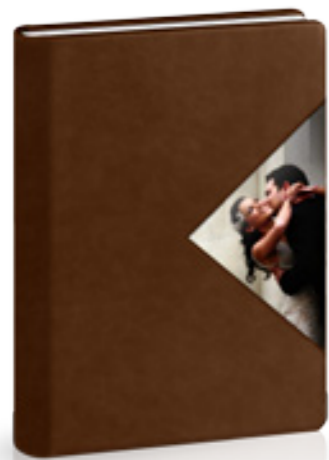
Maroon



Code:

201-N04

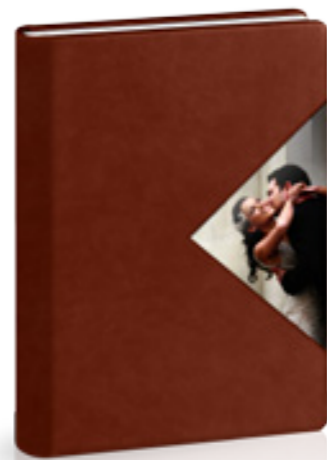
Saddle Brown



Code:

201-N05

Rustic Brown



Code:

201-N06

Dark Chocolate



Code:

201-N07

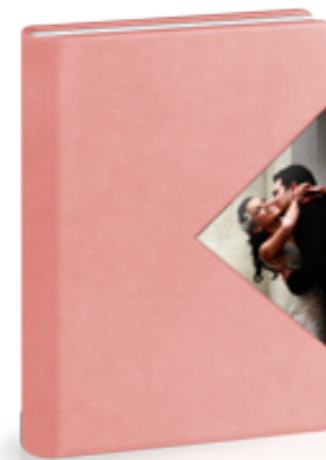
Turquoise



Code:

201-N12

Pink



Code:

201-N13

Dark Pewter



Code:

201-N14

Oceania



Code:

201-N15

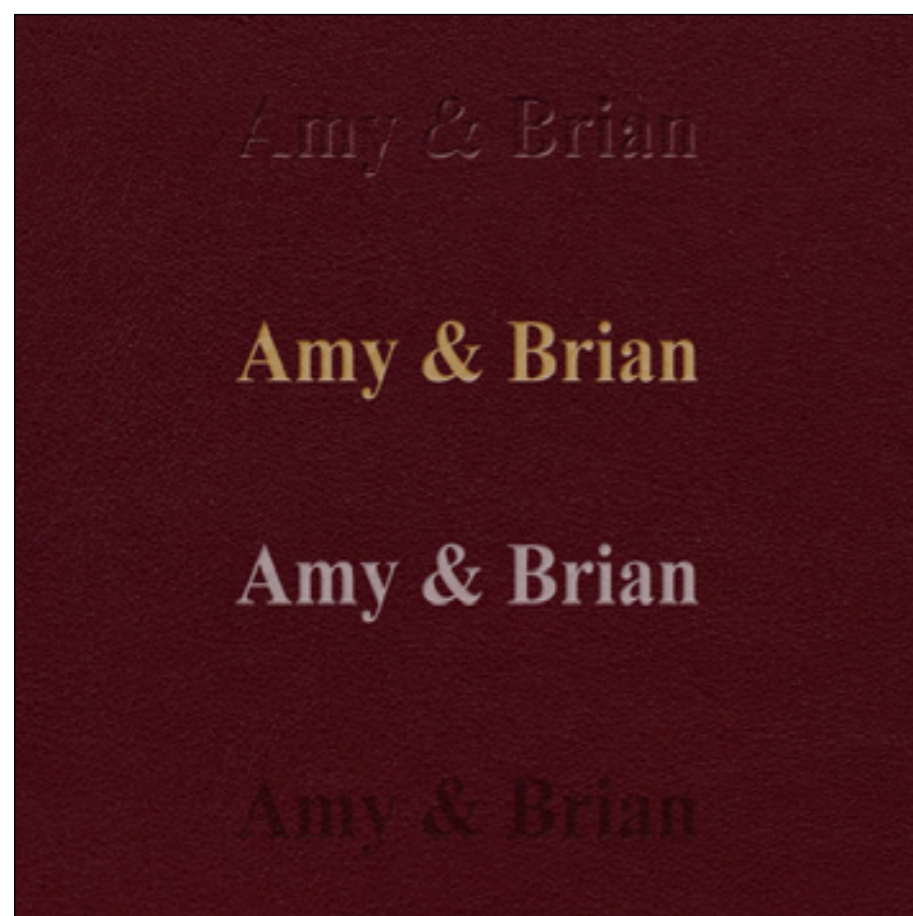
Black



Cowhide



Cowhide

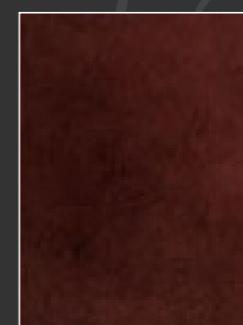


Impressed Text

(Font available: Times, Helvetica)

- 1 Debossing
- 2 Gold foil debossing
- 3 Silver foil debossing
- 4 Engraving

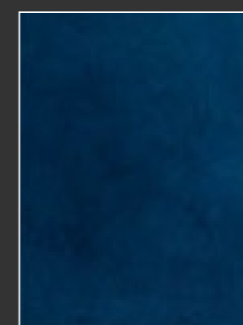
Font shown: Times



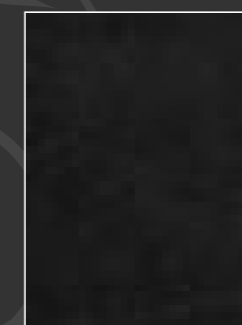
Code: C01
Brown



Code: C02
Burgundy



Code: C03
Blue



Code: C04
Black

The 4 available colours might be subject to slight variations of shade, since the material is entirely natural.

Cowhide

The tradition of real Italian cowhide serving photography through a classy and elegant style.

4 different colours to stand out in the market: a traditionally tailored cover, refined with an exquisite seam around the edge. Your more tradition-orientated clients will find in this product all the reassuring nobility of centuries of craftsmanship.



Version shown
Landscape book
C 02
Embossing
with silver foil *Helvetica*

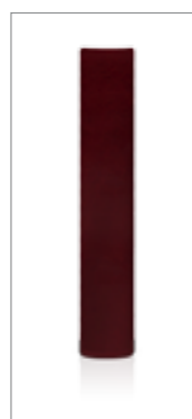
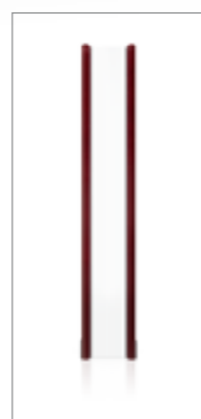


Version shown
Square book
C 02
Embossing
with silver foil *Helvetica*



Available size
VERTICAL
20x30
25x35
30x40
35x45
40x50
SQUARE
20x30
25x35
30x40
35x45
40x50
LANDSCAPE
30x20
35x25
40x30
45x35

Version shown
Vertical book
C 02
Embossing
with silver foil *Helvetica*



Cover handcrafting detail

Code:

C01

Brown



Code:

C02

Burgundy



Code:

C03

Blue



Code:

C04

Black



Some samples of CUSTOMIZED COVERS



Version shown
Vertical book
C 03
Embossing
with gold foil *Times*



Version shown
Landscape book
C 01
Embossing *Times*

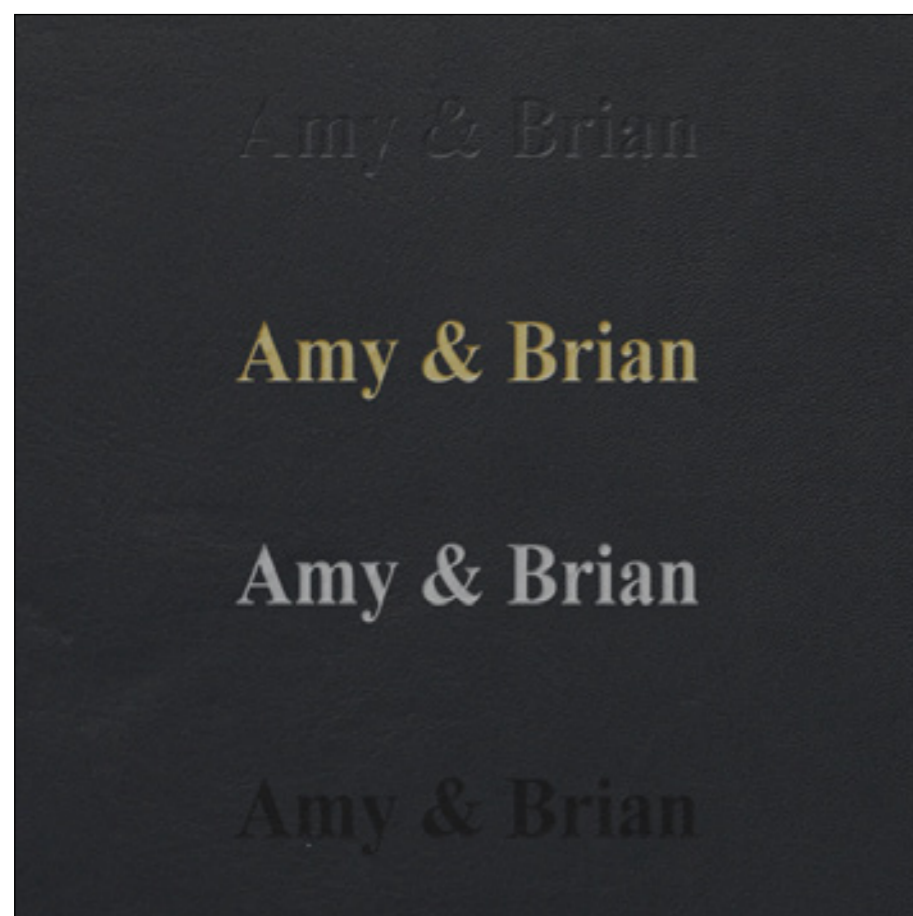


Version shown
Square book
C 04
Embossing
with silver foil *Helvetica*

Leatherette



Leatherette

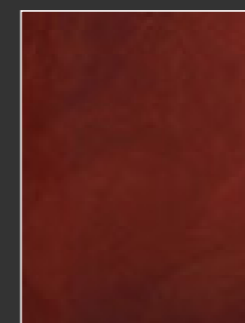


Impressed Text

(Font available: Times, Helvetica)

- 1 Debossing
- 2 Gold foil debossing
- 3 Silver foil debossing
- 4 Engraving

Font shown: Times



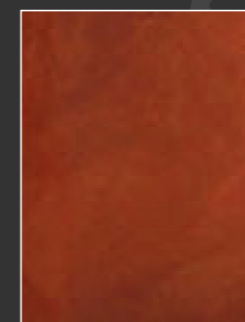
Code: F01
Brown



Code: F02
Blue



Code: F03
Black



Code: F04
Sienna



Code: F05
White

available only for the back and spine of Transparent covers

COVERS Leatherette

A range where elegance of the classic line and opening price point meet.

Available in two versions standard and continuous (seamless), this material offers an excellent product at a reasonable price. Like all our classic covers, it can be personalized by embossing or engraving the text.

Version shown
Landscape book
F03
Embossing with gold foil
Helvetica

Version shown
Square book
F03
Embossing with gold foil
Helvetica

Version shown
Vertical book
F03
Embossing with gold foil
Helvetica

Available size
VERTICAL
20x30
25x35
30x40
35x45
40x50
SQUARE
20x30
25x35
30x40
35x45
40x50
LANDSCAPE
30x20
35x25
40x30
45x35



Cover handcrafting detail

COVERS Leatherette

Code:

F01

Brown



Code:

F02

Blue



Code:

F03

Black



Code:

F03

Black Countinous



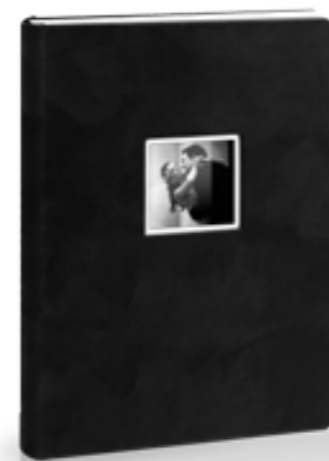
COVERS Die Cut Leatherette

The die cut option is personalized by inserting an image in black and white or sepia tone.

Code:

200-F03

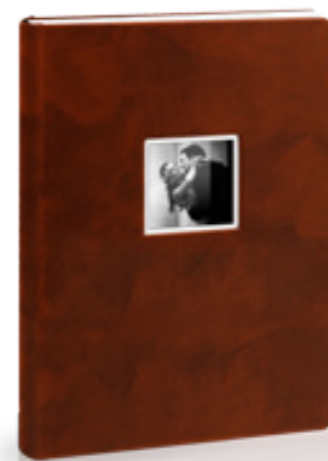
Black



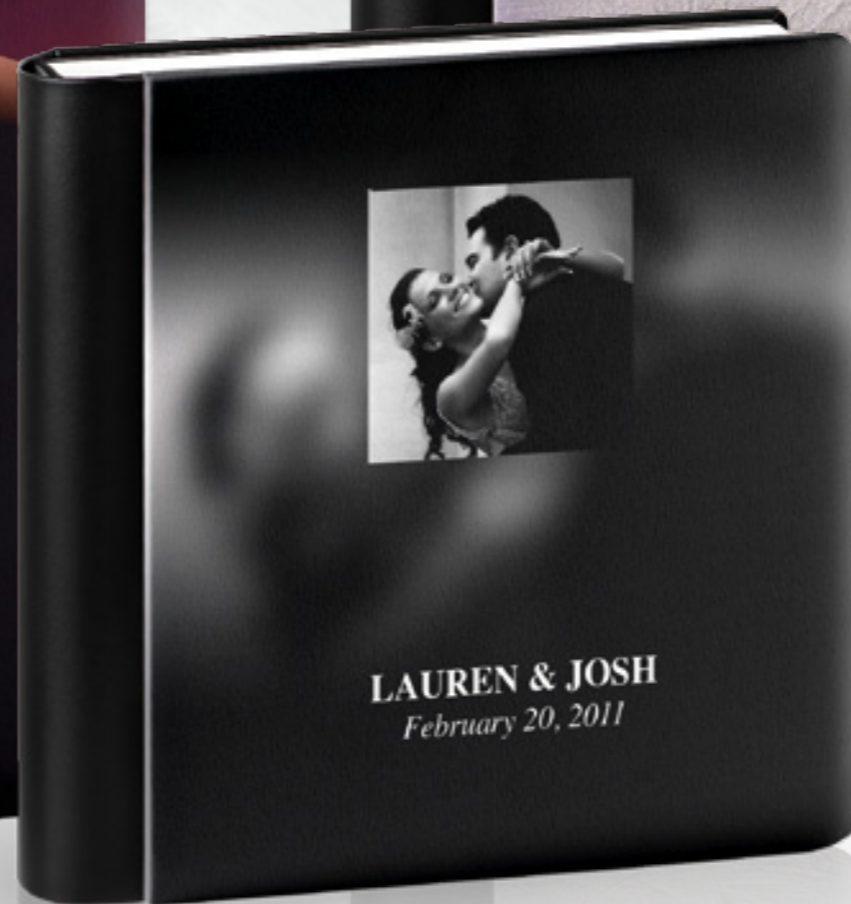
Code:

200-F04

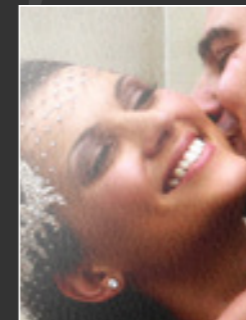
Sienna



Silk



Silk



Code:
Glossy silk



Code:
Matt silk

Silk

Silk has always been another term for elegance and excellence, and now you can associate these characteristics to an exclusive and completely customizable product.

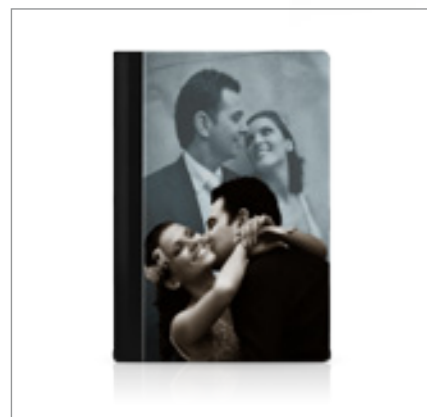
Our silk covers (in both the matte and glossy versions) mix the creativity expressed by the printed images with the refined touch of the material. The back and spine are prepared in leatherette by default, but can be upgraded to leather, nappa or distressed to enrich the product even more.

Version shown
Landscape book
113/2
Leatherette back and spine

Version shown
Square book
113/2
Leatherette back and spine

Version shown
Vertical book
113/2
Leatherette back and spine

Available size
VERTICAL
20x30
25x35
30x40
35x45
40x50
SQUARE
20x30
25x35
30x40
35x45
40x50
LANDSCAPE
30x20
35x25
40x30
45x35



Cover handcrafting detail

Code:

Your File

Send your file
print ready



Code:

Photo colour



Code:

Photo b&w



Code:

Photo sepia + colour



Code:

120/0



Code:

120/1



Code:

120/4



Code:

121/4



Code:

111/0



Code:

113/2



Code:

113/6



Code:

114/5



Code:

400/1



Code:

420/4



Code:

480/4



Code:

501/9



Some samples of
CUSTOMIZED COVERS

Code:

503/5



Code:

701/6



Code:

702/14



Version shown
Landscape book
111/0
Spine N12



Version shown
Square book
114/5
Spine N05

Version shown
Vertical book
113/2
Spine D05

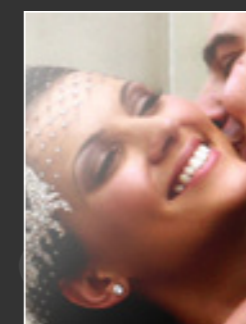
CRYSTAL GLANCE



CRYSTAL GLANCE



LAUREN & JOSH
February 20, 2011



Code:
Crystal Glance

CRYSTAL GLANCE

In this new generation of acrylic covers, the highest technologies provide smooth, pure, crystal like materials to offer your clients extraordinary options.

The back and spine are prepared in leatherette by default, but can be upgraded to leather, nappa or distressed.



Version shown
Vertical book
Crystal Glance
Leatherette back and spine

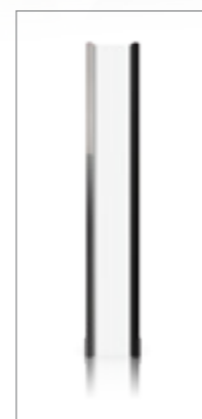
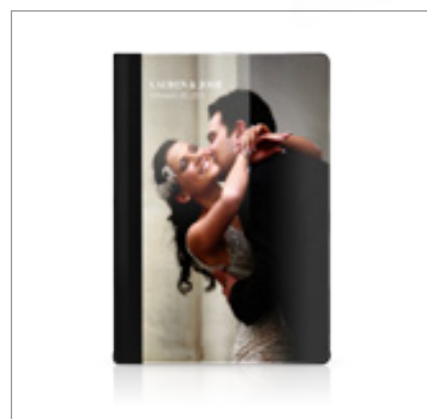


Version shown
Landscape book
Crystal Glance
Leatherette back and spine



Version shown
Square book
Crystal Glance
Leatherette back and spine

Available size
VERTICAL
20x30
25x35
30x40
35x45
40x50
SQUARE
20x30
25x35
30x40
35x45
40x50
LANDSCAPE
30x20
35x25
40x30
45x35



Cover handcrafting detail

COVERS CRYSTAL GLANCE

Some samples of
CUSTOMIZED COVERS

Code:

Your File

Send your file
print ready



Code:

Crystal Glance



Version shown
Landscape book
Crystal Glance
Spine N 02

Version shown
Vertical book
Crystal Glance
Spine D 03

Version shown
Square book
Crystal Glance
Leatherette back and spine
File

DUST COVER JACKET

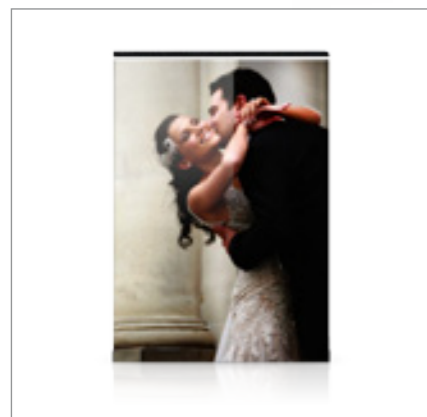


DUST COVER JACKET

The Dust cover jacket, printed on metallic paper, wrap the book up, conferring an editorial like taste to the product.



Available size
VERTICAL
10x13
15x20
20x30
SQUARE
10x10
15x15
20x20
LANDSCAPE
13x10
20x15
30x20



Cover handcrafting detail

HARDBACK



HARDBACK

This cover option, with its clean, professional look, is ideal for portraits, family or smaller copies.

The image can be reproduced throughout the front, spine and back cover, and it is applied on a rigid cardboard.

Version shown
Landscape book

Version shown
Square book

Version shown
Vertical book

Available size
VERTICAL
10x13
15x20
20x30
SQUARE
10x10
15x15
20x20
LANDSCAPE
10x10
15x15
20x20



Cover handcrafting detail

Sleeves



Sleeves

Graphistudio's solution for the photographers that really care about their book presentation.

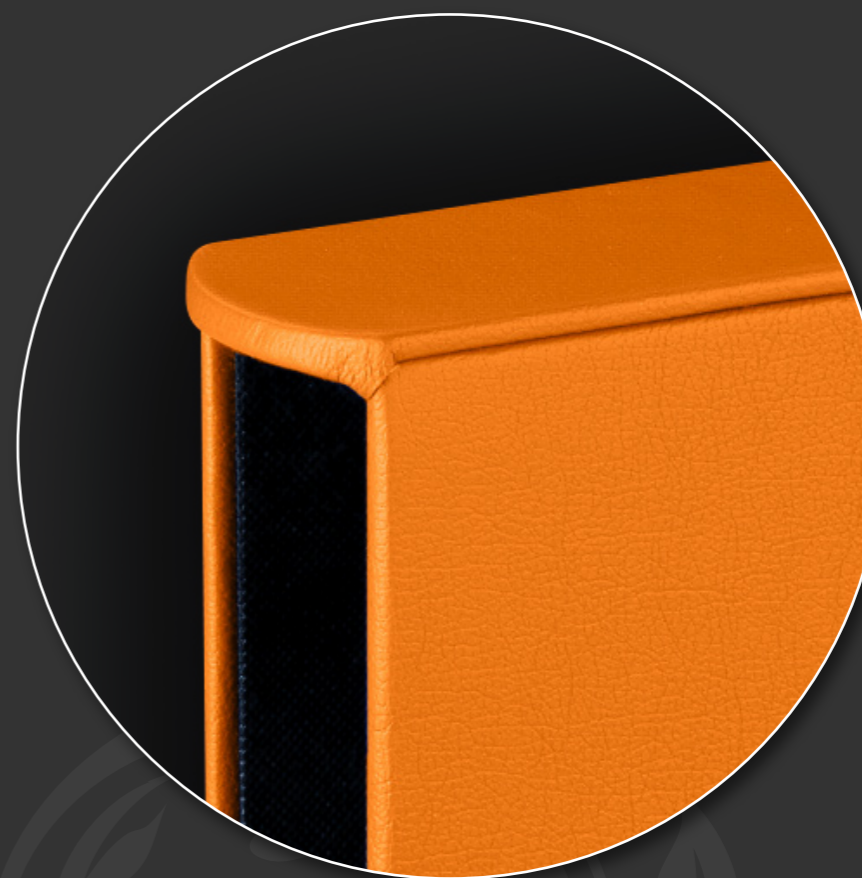
Available in the leather and leatherette collection, the coordinated sleeve adds a touch of elegance to the book, matching its cover and spine for a classic and timeless result.

A perfect solution for demanding clients.



Available size
VERTICAL
25x35
30x40
SQUARE
25x25
30x30
35x35
40x40

Version shown
Square book
200-D04



Sleeve handcrafting detail

Forms

A new, revolutionary idea by Graphistudio.

A new concept, a simple idea, an ultra modern design: Forms gives a new shape to the photographic book. Only by Graphistudio. Impress your clients with the only product of its kind.

Be first, be a leader. Forms can be ordered as a stand alone product. Each Forms is composed by two parts: a base that holds the book, available in different finishes, and a transparent cap. Simply select the option(s) you like and the quantity for each one.

Note: the book in the below images are for demonstration purposes only.



Compatible book size
VERTICAL
25x35
Up to 70 pages.



Forms handcrafting detail

Code:

**Black spine
Black base**



Code:

**White spine
White Base**



Code:

**Black spine
White Base**



Code:

**White spine
Chrome base**



Code:

**Black spine
Chrome base**



Code:

**Opaque spine
Chrome base**



Version shown
**Black spine
Black base**



Version shown
**Black spine
Chrome base**

LUXURY BOXES

A new line of accessories to give you even more options to choose from: these high quality boxes have been designed to accommodate different tastes and needs, especially as they are highly customizable by printing your images directly on the material.

From the elegant and refined Stylish Sleeve to the colourful and bright Art Box: each option will pleasantly take you by surprise.



ART BOX



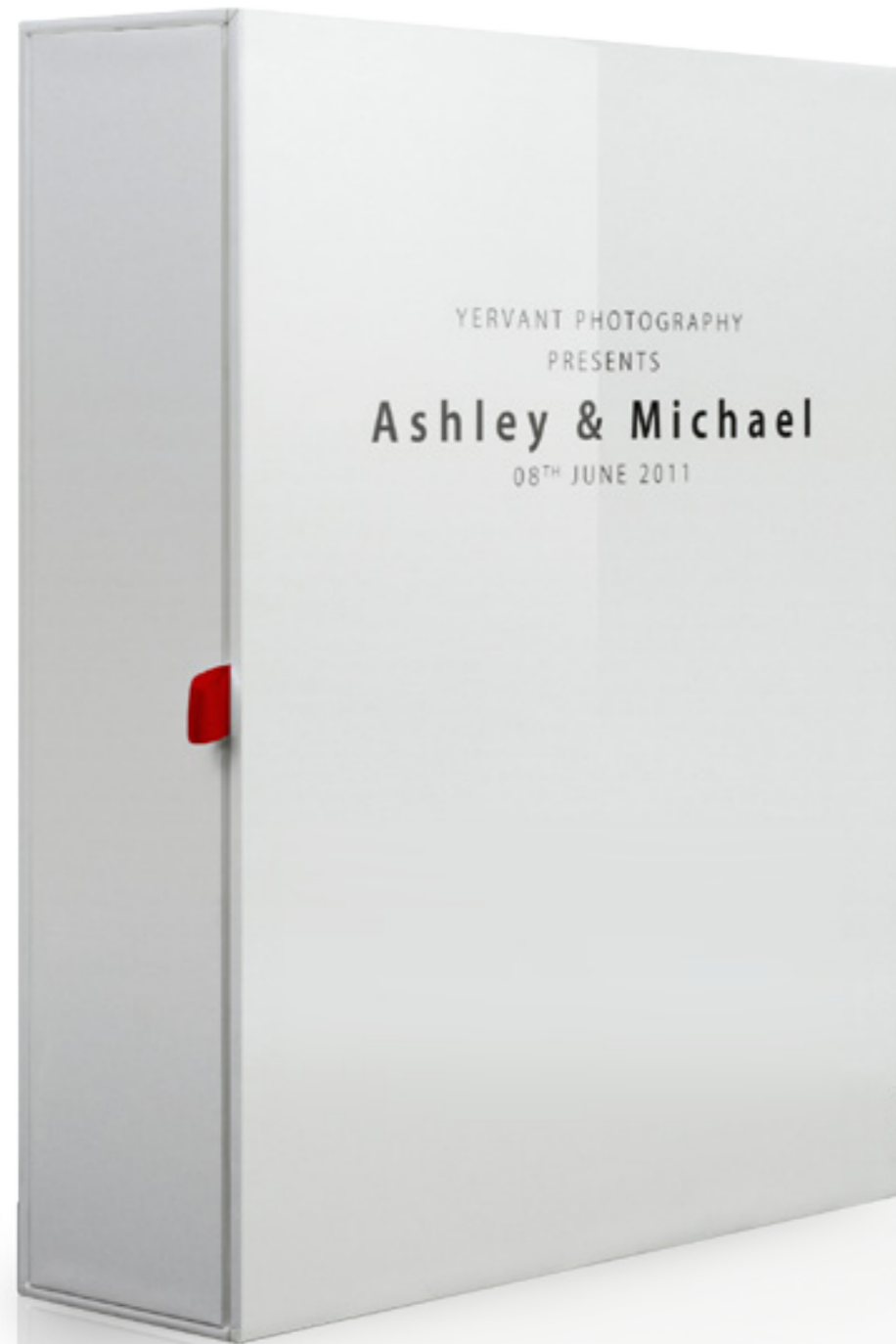
Available size
VERTICAL
20x30
25x35
30x40
35x45
40x50
SQUARE
20x20
25x25
30x30
35x35
40x40
LANDSCAPE
30x20
35x25
40x30
45x35

**SOON
AVAILABLE**



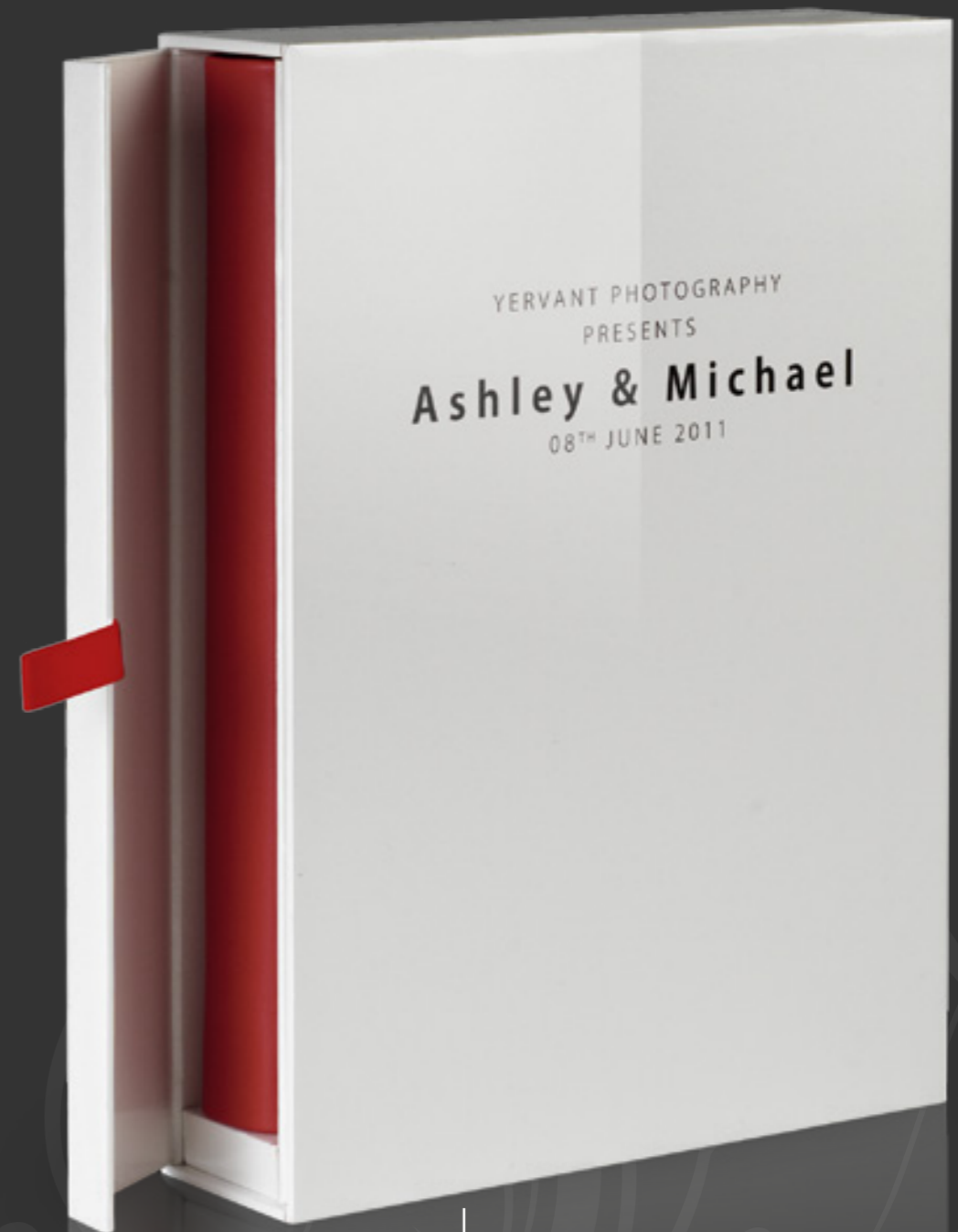
Box handcrafting detail

STYLISH SLEEVE



Available size
VERTICAL
20x30
25x35
30x40
35x45
40x50
SQUARE
20x20
25x25
30x30
35x35
40x40
LANDSCAPE
30x20
35x25
40x30
45x35

SOON AVAILABLE



Box handcrafting detail



Copyright Graphistudio - 2011 All rights reserved
Ed. dec. 2011

Pictures on the cover are courtesy of Yervant